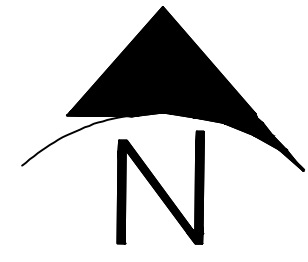


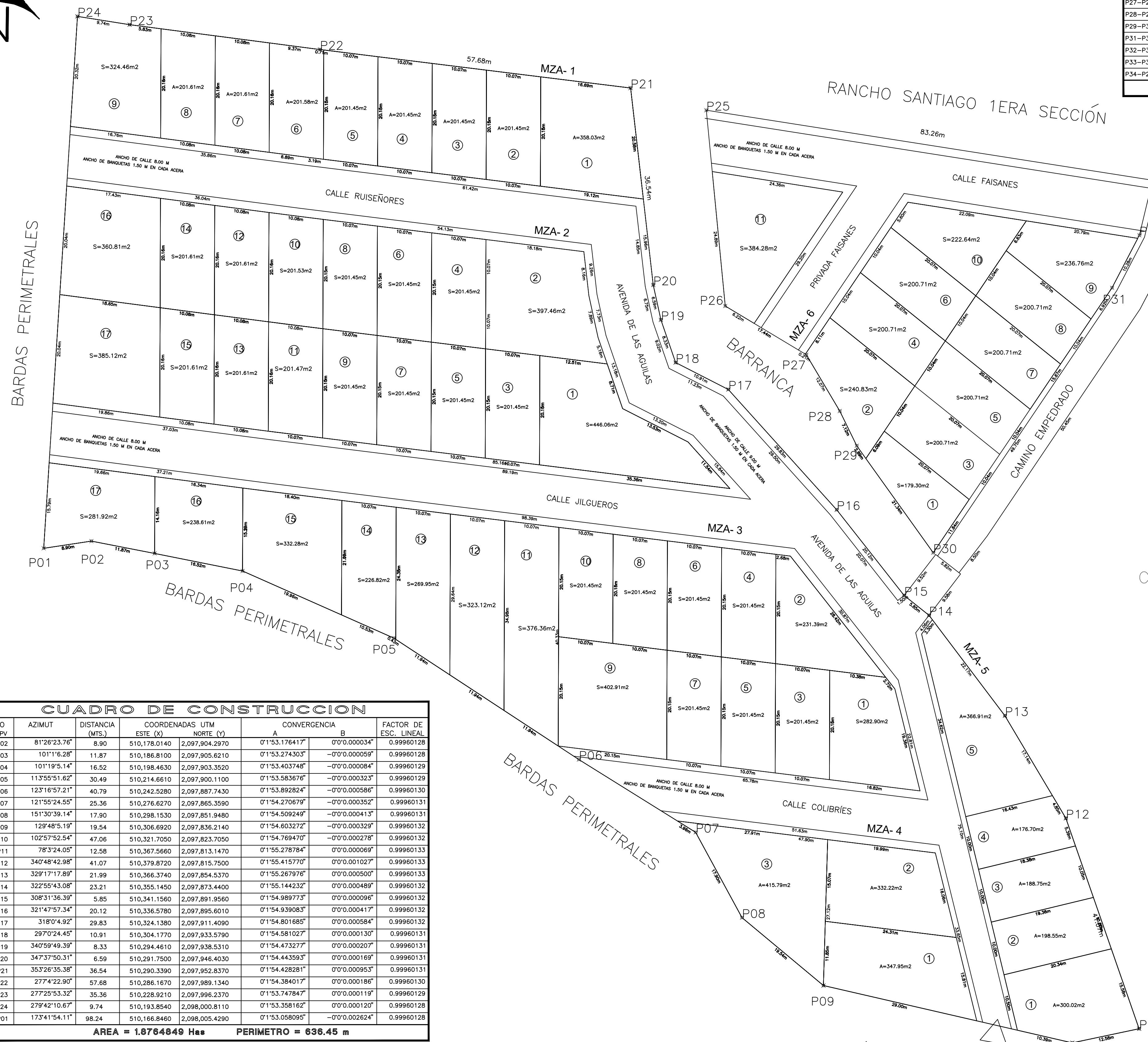
PLANO TOPOGRÁFICO

DESARROLLO "2DA SECCIÓN DE RANCHO SANTIAGO"



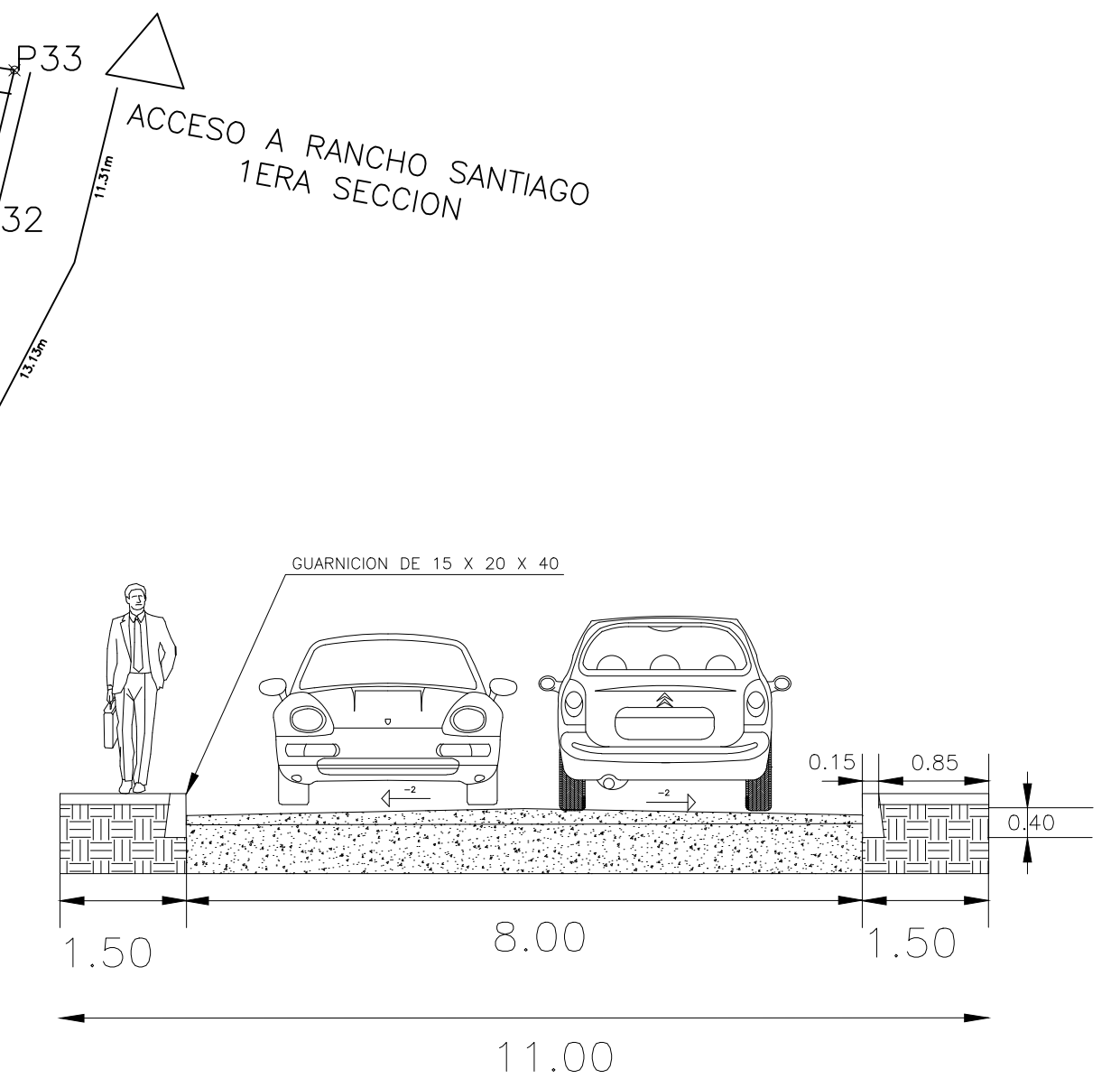
LADO EST-PV	AZIMUT	DISTANCIA (MTS.)	COORDENADAS UTM		CONVERGENCIA		FACTOR DE ESC. LINEAL
			ESTE (X)	NORTE (Y)	A	B	
P25-P26	174°28'26.52"	36.25	510,300.1140	2,097,985.0410	0°1'54.538869"	-0°0'0.000948"	0.99960131
P26-P27	121°11'12.30"	17.44	510,303.6050	2,097,948.9570	0°1'54.575570"	-0°0'0.000236"	0.99960131
P27-P28	149°18'3.30"	12.07	510,318.5550	2,097,938.9670	0°1'54.741284"	-0°0'0.000273"	0.99960132
P28-P29	153°57'37.15"	7.12	510,324.7150	2,097,929.5920	0°1'54.809171"	-0°0'0.000169"	0.99960132
P29-P30	144°26'30.82"	24.23	510,327.8410	2,097,923.1940	0°1'54.843555"	-0°0'0.000520"	0.99960132
P30-P31	34°1'2.13"	58.91	510,341.9326	2,097,903.4807	0°1'54.999088"	0°0'0.001290"	0.99960133
P31-P32	27°26'15.41"	10.92	510,374.8890	2,097,952.3088	0°1'55.368440"	0°0'0.000257"	0.99960133
P32-P33	13°33'27.37"	10.42	510,379.9214	2,097,962.0018	0°1'55.424974"	0°0'0.000268"	0.99960133
P33-P34	278°55'4.45"	83.26	510,382.3648	2,097,972.1345	0°1'55.452744"	0°0'0.000341"	0.99960132

AREA = 0.3709803 Has PERIMETRO = 280.63 m



LADO EST-PV	AZIMUT	DISTANCIA (MTS.)	COORDENADAS UTM		CONVERGENCIA		FACTOR DE ESC. LINEAL
			ESTE (X)	NORTE (Y)	A	B	
P01-P02	81°26'23.76"	8.90	510,178.0140	2,097,904.2970	0°1'53.176417"	0°0'0.000034"	0.99960128
P02-P03	101°11'6.28"	11.87	510,186.8100	2,097,905.6210	0°1'53.274303"	-0°0'0.000050"	0.99960128
P03-P04	101°19'5.14"	16.52	510,198.4630	2,097,903.3520	0°1'53.403748"	-0°0'0.000084"	0.99960129
P04-P05	113°55'51.62"	30.49	510,214.6610	2,097,900.1100	0°1'53.583676"	-0°0'0.000323"	0.99960129
P05-P06	123°16'57.21"	40.79	510,242.5280	2,097,887.7430	0°1'53.892824"	-0°0'0.000586"	0.99960130
P06-P07	121°55'24.55"	25.36	510,276.6270	2,097,865.3590	0°1'54.270679"	-0°0'0.000352"	0.99960131
P07-P08	151°30'39.14"	17.90	510,298.1530	2,097,851.9480	0°1'54.509249"	-0°0'0.000413"	0.99960131
P08-P09	129°48'5.19"	19.54	510,306.6920	2,097,836.2140	0°1'54.603272"	-0°0'0.000329"	0.99960131
P09-P10	102°57'52.54"	47.06	510,321.7050	2,097,823.7050	0°1'54.769470"	-0°0'0.000278"	0.99960132
P10-P11	78°3'24.05"	12.58	510,367.5660	2,097,813.1470	0°1'55.278784"	0°0'0.000069"	0.99960133
P11-P12	340°48'42.98"	41.07	510,379.8720	2,097,815.7500	0°1'55.415770"	0°0'0.001027"	0.99960133
P12-P13	329°17'17.89"	21.99	510,366.3740	2,097,854.5370	0°1'55.267976"	0°0'0.000500"	0.99960133
P13-P14	322°55'43.08"	23.21	510,355.1450	2,097,873.4400	0°1'55.144232"	0°0'0.000489"	0.99960132
P14-P15	308°31'36.39"	5.85	510,341.1560	2,097,891.9560	0°1'54.989773"	0°0'0.000096"	0.99960132
P15-P16	321°47'57.34"	20.12	510,336.5780	2,097,895.6010	0°1'54.939083"	0°0'0.000417"	0.99960132
P16-P17	318°0'4.92"	29.83	510,324.1380	2,097,911.4090	0°1'54.801685"	0°0'0.000584"	0.99960132
P17-P18	297°0'24.45"	10.91	510,304.1770	2,097,933.5790	0°1'54.581027"	0°0'0.000130"	0.99960131
P18-P19	340°59'49.39"	8.33	510,294.4610	2,097,938.5310	0°1'54.473277"	0°0'0.000207"	0.99960131
P19-P20	347°37'50.31"	6.59	510,291.7500	2,097,946.4030	0°1'54.443593"	0°0'0.000169"	0.99960131
P20-P21	353°26'35.38"	36.54	510,290.3390	2,097,952.8370	0°1'54.428281"	0°0'0.000953"	0.99960131
P21-P22	277°4'22.90"	57.68	510,286.1670	2,097,989.1340	0°1'54.384017"	0°0'0.000186"	0.99960130
P22-P23	277°25'53.32"	35.36	510,228.9210	2,097,996.2370	0°1'53.747847"	0°0'0.000119"	0.99960129
P23-P24	279°42'10.67"	9.74	510,193.8540	2,098,000.8110	0°1'53.358162"	0°0'0.000120"	0.99960128
P24-P01	173°41'54.11"	98.24	510,166.8460	2,098,005.4290	0°1'53.058095"	-0°0'0.002624"	0.99960128

AREA = 1.8764649 Has PERIMETRO = 636.45 m



- SIMBOLOGÍA**
- 10.00m MEDIDA DE TERRENO
 - PUNTO LEVANTADO
 - A=236.61m² ÁREA DE TERRENO
 - 61 PUNTOS REFERENCIA

DATOS DE PROYECTO

LEVANTAMIENTO TOPOGRAFICO EN SITIO CON ESTACION TOTAL GOWIN TKS-200 PROPIEDAD DEL LIC. ABRAHAM FERNANDEZ TREVIÑO.

PROYECTO DE DIVISION EN LOTES DEL POLIGONO LEVANTADO UBICADO EN PREDIO DENOMINADO SANTIAGO TONALA Y LAS MARZANAS TOTOLAPAN MORELOS

TOTOLAPAN, MORELOS

Proyecto:
LEVANTAMIENTO TOPOGRAFICO DE PREDIO CON PROPUESTA DE DIVISION

Plano: **PLANO TOPOGRÁFICO Y DE DIVISION** No. Plano: **01**

Levantó: ARG. ALFREDO COLÓN MARTÍNEZ

Dibujó: ARG. ALFREDO COLÓN MARTÍNEZ

Nombre del Propietario:

Ubicación: "RANCHO SANTIAGO" MUNICIPIO DE TOTOLAPAN
Clave Catastral: 5500-00-901-133
Fecha: 06/03/2024 Escala: 1:400

PROPIETARIO DEL PREDIO

PERITO RESPONSABLE
ARG. ALFREDO COLÓN MARTÍNEZ
CEDULA PROFESIONAL: 11794390
REGISTRO DE DIRECTOR RESPONSABLE DE OBRA: DJ-OP-DRO-10/ 2024